

What Will My Child Learn & Do?

Art	Puzzles
Music	Cooking
Math	Bible Stories
Science	Prayer
Language Arts	Fine Motor Skills
Literacy	Gross Motor Skills
Manipulatives	Social Emotional Development
Blocks	

...And more!

Our curriculum aligns with the academic standards set by the state of Colorado.

ACSI  Member School

2019-2020 Calendar At-A-Glance

Parent/Student Orientation

Monday families:
Tuesday, September 3, 9:15 –10:30 am
Tuesday families:
Tuesday, September 3, 10:45 am – 12:00 pm

Friday Enrichment Classes Begin

September 6, 9:15 am-1:15 pm

Fall Break

October 14-18

Thanksgiving Break

November 27-29

Christmas Break

December 20 - January 3

Spring Break

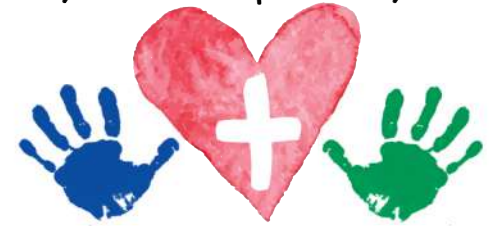
March 16-20

End of School

Week of May 18



cherry creek presbyterian



preschool & playschool

PLAYSCHOOL

19 mos-3 years old

303.771.1364



Cherry Creek Presbyterian Church
10150 E. Belleview Ave. Englewood, CO 80111
303.771.1364; www.cherrycreekpres.org

Who We Are

Our Mission

Promoting the growth and development of the young child in a Christ-centered environment.

Our School

We offer quality Christian care and education for children ages 19 months - 5 years.

We provide parenting support to help you understand your child's development and sharpen your parenting skills.

Our Director

Lorna Tamsett, M.A., started the school in 1986. She is a certified director/teacher with over 40 years of experience.

Our Teachers

Our teachers love Jesus, love children, and love teaching.

Our teachers are dedicated and qualified Early Childhood Educators.

Each teacher has a personal relationship with the Lord.



Why Choose Us?

Faith-Based

Your child will grow in their love of God and His creation.

Quality Education

We offer a safe & nurturing environment in which children develop a positive self-concept and respect for others.

Our age-appropriate educational curriculum stimulates curiosity, fosters the excitement of learning, and facilitates social-emotional skills.

Low Teacher/Student Ratio

Each of our classes has a team of two experienced teachers.

Our Teacher/Student ratio for the Toddler class is 1:4, and 1:6 for the Young 3's class.

"CHILDREN ARE A GIFT FROM GOD"

- Psalm 127:3



Enrollment & Fees

Our school enrolls qualified children regardless of race, color, sex, or religion.

EXPLORERS - Toddler Class

Age 19-27 months by October 1

Monday or Tuesday, 9:15 am - 1:15 pm

OPTIONAL Friday enrichment *(based on availability)*

8 children, two experienced teachers

Parents provide lunch and participate in providing daily & holiday snacks for the class.

BUILDERS - Young 3s Class

Age 28-36 months by October 1

Monday or Tuesday, 9:15 am - 1:15 pm

OPTIONAL Friday enrichment *(based on availability)*

12 children, two experienced teachers

Parents provide lunch and participate in providing daily & holiday snacks for the class.

FEES

Monday Tuition	\$110 per month
Tuesday Tuition	\$115 per month
Friday Enrichment Tuition	\$110 per month
Registration Fee	\$125
<i>(non-refundable, due upon enrollment, guarantees spot)</i>	
FACTS Enrollment	\$43
<i>(Mandatory Automated Withdrawal System for tuition)</i>	

